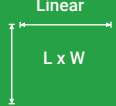








Great Meetings **START HERE** 2022



Room Rental Pricing



DESCRIPTION	DIMENSIONS		ESTIMATED ROOM CAPACITIES					FULL DAY PRICE* (non-profit discount)	HALF DAY PRICE* (non-profit discount)
	Linear 	Area 	Theatre 	Classroom 	Table Group 	Boardroom 	U-Shape 		
Conference Centre W & C & E Combined	99' x 40' 30.1m x 12.2m	4024.37sq.ft 497.50 sq.m	288	182	116			\$2017 (\$1714)	\$1210 (\$1028)
CC – West & Central	63'-7" x 40' 19.4m x 12.2m	2609.31sq.ft 242.41 sq.m	188	120	72		46	\$1410 (\$1198)	\$846 (\$719)
CC – East & Central	64'-9" x 40' 19.75m x 12.2m	2623.9 sq.ft 243.77 sq.m	188	116	72			\$1414 (\$1202)	\$848 (\$721)
CC – West	40'-0" x 34'-2" 12.2m x 10.42m	1400.47sq.ft 130.11 sq.m	100	66	44	36	28	\$776 (\$660)	\$466 (\$396)
CC – Central	40'-0" x 29'-7" 12.2m x 9.02m	1208.84sq.ft 112.31 sq.m	88	54	28	32	24	\$704 (\$599)	\$423 (\$359)
CC – East	40'-0" x 35'-3" 12.2m x 10.74m	1415.06 sq.ft 131.46 sq.m	100	62	44	32	22	\$780 (\$663)	\$468 (\$398)
Presentation Centre N & S Combined	72'-2" x 31'-8" 22m x 9.7m	2413.68 sq.ft 224.24 sq.m	156	86	64			\$1300 (\$1105)	\$780 (\$663)
PC – North	36'-8" x 33'-5" 11.8m x 10.2m	1206.84 sq.ft 112.12 sq.m	77	40	32	32	24	\$688 (\$585)	\$413 (\$351)
PC – South	36'-8" x 33'-5" 11.8m x 10.2m	1206.84 sq.ft 112.12 sq.m	76	38	32	32	22	\$688 (\$585)	\$413 (\$351)
Training Room 200	43'-10" x 25'-3" 13.37m x 7.7m	1134.80 sq.ft 105.43 sq.m	OFFLINE						
Training Room 1	30'-3" x 24'-2" 9.22m x 7.36m	700.62 sq.ft 65.09 sq.m		24	20	20	12	\$403 (\$342)	\$242 (\$205)
Training Room 2	30'-3" x 29'-1" 9.22m x 8.87m	943.17 sq.ft 87.62 sq.m		36	32	28	20	\$516 (\$438)	\$309 (\$263)
Training Rooms 3, 4, 5, 6	35'-1" x 19'-8" 10.71m x 5.99m	695.60 sq.ft 64.62 sq.m		24	24	20	20	\$401 (\$341)	\$241 (\$205)
Training Rooms 5 & 6 Combined	39' x 35'-4" 11.8m x 10.8m	1391.82 sq.ft 129.30 sq.m	70	48	48		26	\$713 (\$606)	\$428 (\$364)
Training Room 7	35'-1" x 20'-10" 10.71m x 6.35m	702.81 sq.ft 65.29 sq.m	OFFLINE						
Training Room 8	36'-8" x 23'-2" 11.18m x 7.06m	845.57 sq.ft 78.56 sqm		30	24	24	20	\$486 (\$413)	\$292 (\$248)
Training Room 9	36'-8" x 23'-2" 11.18m x 7.06m	845.57 sq.ft 78.56 sq.m		32	28	24	20	\$486 (\$413)	\$292 (\$248)
Boardroom A	20'-9" x 18'-4" 6.34m x 5.60m	381.96 sq.ft 35.48 sq.m				12		\$235 (\$199)	\$141 (\$120)
Boardroom B	28'-0" x 18'-4" 8.54m x 5.6m	514.96 sq.ft 47.84 sq.m				18		\$312 (\$265)	\$187 (\$159)
Boardroom C	14'-7" x 14'-4" 4.43m x 4.42m	210.96 sq.ft 19.60 sq.m	OFFLINE						
Boardroom D	20'-1" x 14'-7" 6.12m x 4.43m	295.20 sq.ft 27.43 sq.m				12		\$225 (\$191)	\$135 (\$115)
Boardroom E	46'-3" x 31'-11" 14.1m x 9.73m	1477.41 sq.ft 137.26 sq.m				33		\$731 (\$621)	\$439 (\$373)
Boardroom F	19'-8" x 16'-5" 6.0m x 5.01m	323.38 sq.ft 30.04 sq.m				12		\$225 (\$191)	\$135 (\$115)

Smart Rooms J, K	27'-2" x 19'-3" 8.28m x 5.87m	523.51 sq.ft 48.64 sq.m	18	12	16	12	\$330 (\$281)	\$198 (\$168)
Smart Room L	29'-2" x 14'-7" 8.89m x 4.45m	442.60 sq.ft 41.12 sq.m	OFFLINE					
Office 105	19'-3" x 9'-6" 5.87m x 2.89m	185.58 sq.ft 17.24 sq.m		1			\$114 (\$97)	\$69 (\$58)
Office 106	9'-6" x 9'-5" 2.89m x 2.87m	90.83 sq.ft 8.44 sq.m		1			\$90 (\$76)	\$54 (\$46)
Office 107	9'-6" x 9'-5" 2.89m x 2.87m	92.76 sq.ft 8.62 sq.m		1			\$90 (\$76)	\$54 (\$46)

MONTHLY RENTAL AVAILABLE

PRICING EXCLUDES HST

HOURS BREAKDOWN

Full Day 7:30 am – 5:00 pm

Half Day 7:30 am – 12:00 pm OR
1:00 pm – 5:00 pm

Full Day (Evenings) 1:00 pm - 9:00 pm

Half Day (Evenings) 6:00 pm - 9:00 pm

ALL ROOMS INCLUDE:

- FREE Wi-Fi
- No gratuity on catering
- Projector and screen
- Flipcharts (upon request)
- FREE Parking
- Technical support
- Whiteboard
- Speakers podium

Ask us about our Virtual Office Space [APPLY TODAY AT WWW.CORPORATEEVENTCENTRE.CA](http://WWW.CORPORATEEVENTCENTRE.CA)

HOST YOUR TRADE SHOW AT CHSI!

We are just as passionate about events as you are! As a purpose-built facility we're proud to offer 1,824 square feet of trade show space that can accommodate up to 38 exhibitor booths. Our facility provides everything you need to make your trade show a success, including brightly lit corridors with natural light, options for electrical outlets, pipe and drape, and priority booking of our Conference Centre for additional space.



Contact Reservations for more information and pricing.



ON SITE CATERING & CAFETERIA SERVICES

All our meals are prepared fresh, from scratch every day. We make soups from scratch daily with fresh stocks and local ingredients. Our hamburgers are hand-formed in-house, using fresh Ontario beef. We procure turkey, beef, and pork from local farms and roast them in-house daily.

Our blend of local sourcing, culinary craftsmanship and inherently healthy menu choices entice.

TO SCHEDULE YOUR NEXT EVENT CONTACT

Tel 905.614.2120

Toll free 1.866.432.2474

Email reservation@corporateeventcentre.ca



A custom-built modern facility, for corporate events



✓ **Your Purpose-Built Meeting Facility –**

Whether you're a Fortune 500 enterprise or a non-profit organization, we offer spaces to suit any budget seven days a week



✓ **Technology Driven –** All-inclusive A/V and Wi-Fi at your convenience



✓ **Flexible Reservations –** Versatile configurations, full or half-day bookings and a selection of rooms and sizes



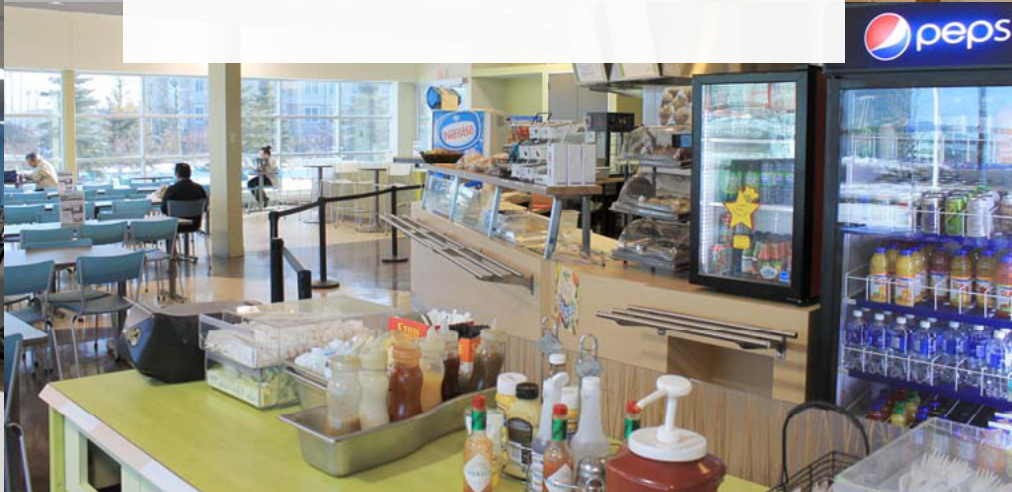
✓ **On-Site Catering –** Full-service catering and cafeteria options that are fresh and made-to-order



✓ **Modern Design –** Designed with a modern aesthetic and professional touches



✓ **Inclusive Pricing –** No service charges, free parking and technical support



Visit our website to view our floor plan,
catering menu or other reservation tools.
corporateeventcentre.ca



The Corporate Event Centre is a purpose-built meeting facility, providing unparalleled service to clients in the market for meeting, training, conference and event rental space. Open to the public, the Corporate Event Centre can accommodate groups from 8 – 288, with proximity to local airports, highways, and hotels.

To Schedule Your Next Event Contact

Tel 905.614.2120 Toll free 1.866.432.2474

Email reservation@corporateeventcentre.ca

5110 Creekbank Road, Mississauga, Ontario L4W 0A1 Canada