

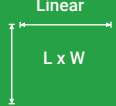






# Great Meetings **START HERE**



**2023  
Room Rental Pricing**





| DESCRIPTION                          | DIMENSIONS  |   | ESTIMATED ROOM CAPACITIES  |  |  |   |  | FULL DAY PRICE*<br>(non-profit discount) | HALF DAY PRICE*<br>(non-profit discount) |
|--------------------------------------|---|---|--|--|--|---|--|--|--|
|                                      | Linear<br> | Area<br> | Theatre<br> | Classroom<br> | Table Group<br> | Boardroom<br> | U-Shape<br> |  |  |
| Conference Centre W & C & E Combined | 99' x 40'<br>30.1m x 12.2m  | 4024.37sq.ft<br>497.50 sq.m   | 288  | 182  | 116  |   |  | \$2293 (\$1949)                          | \$1376 (\$1169)                          |
| CC – West & Central                  | 63'-7" x 40'<br>19.4m x 12.2m   | 2609.31sq.ft<br>242.41 sq.m   | 188  | 120  | 72   |   | 46   | \$1533 (\$1303)                          | \$920 (\$782)                            |
| CC – East & Central                  | 64'-9" x 40'<br>19.75m x 12.2m  | 2623.9 sq.ft<br>243.77 sq.m   | 188  | 116  | 72   |   |  | \$1540 (\$1309)                          | \$924 (\$786)                            |
| CC – West                            | 40'-0" x 34'-2"<br>12.2m x 10.42m   | 1400.47sq.ft<br>130.11 sq.m   | 100  | 66   | 44   | 36  | 28   | \$833 (\$708)                            | \$499 (\$425)                            |
| CC – Central                         | 40'-0" x 29'-7"<br>12.2m x 9.02m  | 1208.84sq.ft<br>112.31 sq.m   | 88   | 54   | 28   | 32  | 24   | \$737 (\$626)                            | \$442 (\$376)                            |
| CC – East                            | 40'-0" x 35'-3"<br>12.2m x 10.74m   | 1415.06 sq.ft<br>131.46 sq.m  | 100  | 62   | 44   | 32  | 22   | \$840 (\$714)                            | \$504 (\$428)                            |
| Presentation Centre N & S Combined   | 72'-2" x 31'-8"<br>22m x 9.7m   | 2413.68 sq.ft<br>224.24 sq.m  | 156  | 86   | 64   |   |  | \$1417 (\$1204)                          | \$850 (\$723)                            |
| PC – North                           | 36'-8" x 33'-5"<br>11.8m x 10.2m  | 1206.84 sq.ft<br>112.12 sq.m  | 77   | 40   | 32   | 32  | 24   | \$728 (\$619)                            | \$437 (\$371)                            |
| PC – South                           | 36'-8" x 33'-5"<br>11.8m x 10.2m  | 1206.84 sq.ft<br>112.12 sq.m  | 76   | 38   | 32   | 32  | 22   | \$728 (\$619)                            | \$437 (\$371)                            |
| Training Room 200                    | 43'-10" x 25'-3"<br>13.37m x 7.7m   | 1134.80 sq.ft<br>105.43 sq.m  | OFFLINE  |  |  |   |  |  |  |
| Training Room 1                      | 30'-3" x 24'-2"<br>9.22m x 7.36m  | 700.62 sq.ft<br>65.09 sq.m  |  | 26   | 20   | 20  | 14   | \$424 (\$361)                            | \$255 (\$217)                            |
| Training Room 2                      | 30'-3" x 29'-1"<br>9.22m x 8.87m  | 943.17 sq.ft<br>87.62 sq.m  |  | 36   | 32   | 28  | 20   | \$558 (\$474)                            | \$335 (\$285)                            |
| Training Rooms 3, 4, 5, 6            | 35'-1" x 19'-8"<br>10.71m x 5.99m   | 695.60 sq.ft<br>64.62 sq.m  |  | 24   | 24   | 20  | 20   | \$422 (\$359)                            | \$253 (\$215)                            |
| Training Rooms 5 & 6 Combined        | 39' x 35'-4"<br>11.8m x 10.8m   | 1391.82 sq.ft<br>129.30 sq.m  |  | 48   | 48   |   | 26   | \$800 (\$680)                            | \$480 (\$408)                            |
| Training Room 7                      | 35'-1" x 20'-10"<br>10.71m x 6.35m  | 702.81 sq.ft<br>65.29 sq.m  | OFFLINE  |  |  |   |  |  |  |
| Training Room 8                      | 36'-8" x 23'-2"<br>11.18m x 7.06m   | 845.57 sq.ft<br>78.56 sqm   |  | 30   | 24   | 24  | 20   | \$512 (\$435)                            | \$307 (\$261)                            |
| Training Room 9                      | 36'-8" x 23'-2"<br>11.18m x 7.06m   | 845.57 sq.ft<br>78.56 sq.m  |  | 32   | 28   | 24  | 20   | \$512 (\$435)                            | \$307 (\$261)                            |
| Boardroom A                          | 20'-9" x 18'-4"<br>6.34m x 5.60m  | 381.96 sq.ft<br>35.48 sq.m  |  |  |  | 12  |  | \$240 (\$204)                            | \$144 (\$122)                            |
| Boardroom B                          | 28'-0" x 18'-4"<br>8.54m x 5.6m   | 514.96 sq.ft<br>47.84 sq.m  |  |  |  | 18  |  | \$320 (\$272)                            | \$192 (\$164)                            |
| Boardroom C                          | 14'-7" x 14'-4"<br>4.43m x 4.42m  | 210.96 sq.ft<br>19.60 sq.m  | OFFLINE  |  |  |   |  |  |  |
| Boardroom D                          | 20'-1" x 14'-7"<br>6.12m x 4.43m  | 295.20 sq.ft<br>27.43 sq.m  |  |  |  | 12  |  | \$225 (\$192)                            | \$135 (\$115)                            |
| Boardroom E                          | 46'-3" x 31'-11"<br>14.1m x 9.73m   | 1477.41 sq.ft<br>137.26 sq.m  |  |  |  | 33  |  | \$837 (\$711)                            | \$503 (\$428)                            |
| Boardroom F                          | 19'-8" x 16'-5"<br>6.0m x 5.01m   | 323.38 sq.ft<br>30.04 sq.m  |  |  |  | 12  |  | \$225 (\$192)                            | \$135 (\$115)                            |

|                  |                                  |                            |         |    |    |    |               |               |
|------------------|----------------------------------|----------------------------|---------|----|----|----|---------------|---------------|
| Smart Rooms J, K | 27'-2" x 19'-3"<br>8.28m x 5.87m | 523.51 sq.ft<br>48.64 sq.m | 18      | 12 | 16 | 12 | \$333 (\$283) | \$200 (\$170) |
| Smart Room L     | 29'-2" x 14'-7"<br>8.89m x 4.45m | 442.60 sq.ft<br>41.12 sq.m | OFFLINE |    |    |    |               |               |
| Office 105       | 19'-3" x 9'-6"<br>5.87m x 2.89m  | 185.58 sq.ft<br>17.24 sq.m |         | 1  |    |    | \$117 (\$99)  | \$70 (\$60)   |
| Office 106       | 9'-6" x 9'-5"<br>2.89m x 2.87m   | 90.83 sq.ft<br>8.44 sq.m   |         | 1  |    |    | \$90 (\$77)   | \$54 (\$46)   |
| Office 107       | 9'-6" x 9'-5"<br>2.89m x 2.87m   | 92.76 sq.ft<br>8.62 sq.m   |         | 1  |    |    | \$90 (\$77)   | \$54 (\$46)   |

MONTHLY RENTAL AVAILABLE

PRICING EXCLUDES HST

### HOURS BREAKDOWN

Full Day 7:30 am – 5:00 pm

Half Day 7:30 am – 12:00 pm OR  
1:00 pm – 5:00 pm

Full Day (Evenings) 1:00 pm - 9:00 pm

Half Day (Evenings) 6:00 pm - 9:00 pm

### ALL ROOMS INCLUDE:

- FREE Wi-Fi
- No gratuity on catering
- Projector and screen
- Flipcharts (upon request)
- FREE Parking
- Technical support
- Whiteboard
- Speakers podium

**Ask us about our Virtual Office Space** APPLY TODAY AT [WWW.CORPORATEEVENTCENTRE.CA](http://WWW.CORPORATEEVENTCENTRE.CA)

## HOST YOUR TRADE SHOW AT CHSI!

We are just as passionate about events as you are! As a purpose-built facility we're proud to offer 1,824 square feet of trade show space that can accommodate up to 38 exhibitor booths. Our facility provides everything you need to make your trade show a success, including brightly lit corridors with natural light, options for electrical outlets, pipe and drape, and priority booking of our Conference Centre for additional space.



**Contact Reservations for more information and pricing.**



## ON SITE CATERING & CAFETERIA SERVICES

All our meals are prepared fresh, from scratch every day. We make soups from scratch daily with fresh stocks and local ingredients. Our hamburgers are hand-formed in-house, using fresh Ontario beef. We procure turkey, beef, and pork from local farms and roast them in-house daily.

Our blend of local sourcing, culinary craftsmanship and inherently healthy menu choices entice.

## TO SCHEDULE YOUR NEXT EVENT CONTACT

**Tel** 905.614.2120

**Toll free** 1.866.432.2474

**Email** [reservation@corporateeventcentre.ca](mailto:reservation@corporateeventcentre.ca)





## A custom-built modern facility, for corporate events



### ✓ **Your Purpose-Built Meeting Facility –**

Whether you're a Fortune 500 enterprise or a non-profit organization, we offer spaces to suit any budget seven days a week



### ✓ **Technology Driven –** All-inclusive A/V and Wi-Fi at your convenience



### ✓ **Flexible Reservations –** Versatile configurations, full or half-day bookings and a selection of rooms and sizes



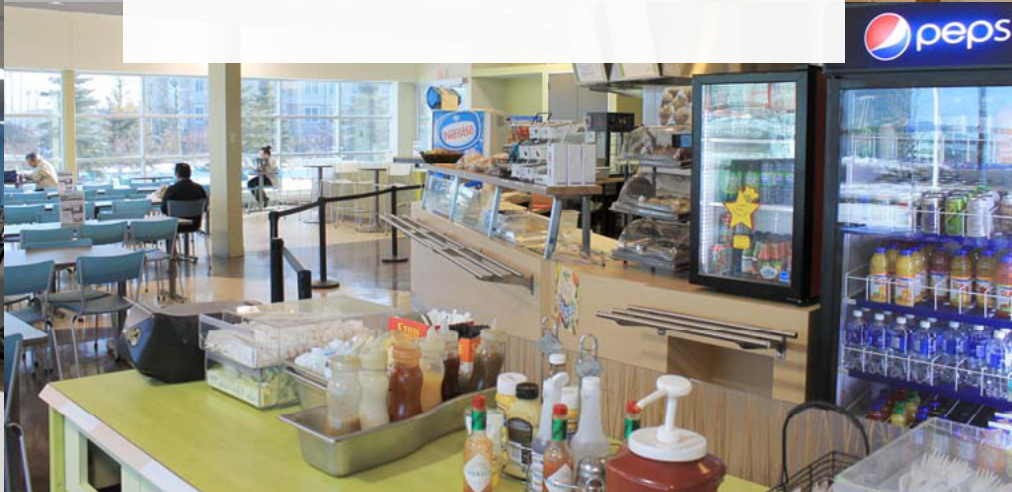
### ✓ **On-Site Catering –** Full-service catering and cafeteria options that are fresh and made-to-order



### ✓ **Modern Design –** Designed with a modern aesthetic and professional touches



### ✓ **Inclusive Pricing –** No service charges, free parking and technical support



Visit our website to view our floor plan,  
catering menu or other reservation tools.  
[corporateeventcentre.ca](http://corporateeventcentre.ca)



The Corporate Event Centre is a purpose-built meeting facility, providing unparalleled service to clients in the market for meeting, training, conference and event rental space. Open to the public, the Corporate Event Centre can accommodate groups from 8 – 288, with proximity to local airports, highways, and hotels.

### To Schedule Your Next Event Contact

Tel 905.614.2120 Toll free 1.866.432.2474

Email [reservation@corporateeventcentre.ca](mailto:reservation@corporateeventcentre.ca)

5110 Creekbank Road, Mississauga, Ontario L4W 0A1 Canada